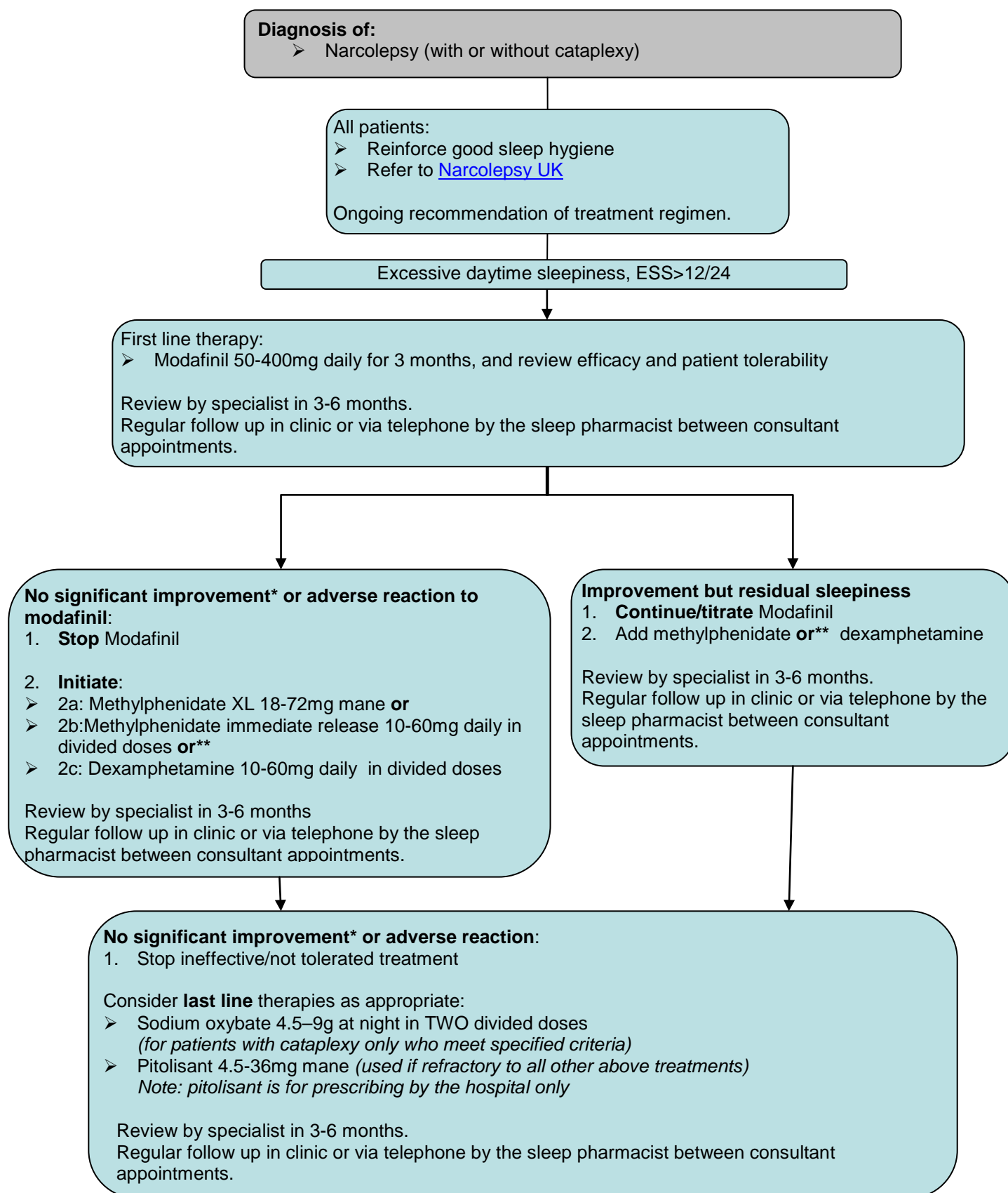


Pathway for the pharmacological management of excessive daytime sleepiness due to narcolepsy

Note: Modafinil, methylphenidate (immediate release and XL), dexamphetamine and sodium oxybate are **APC Amber 3 category** – initiation and minimum **6 months'** supply by the sleep centre (specialising in Narcolepsy). GPs are **not** expected to initiate these treatments but may be asked to take on prescribing in line with APC recommendations under the **shared care guideline**. Pitolisant is **APC RED category** (hospital only) – initiation and ongoing prescribing will be by the sleep service, GPs will not be asked to prescribe pitolisant.



* A significant improvement is a change in ESS of 3 or more.

** Methylphenidate and Dexamphetamine should **not** be prescribed concomitantly.